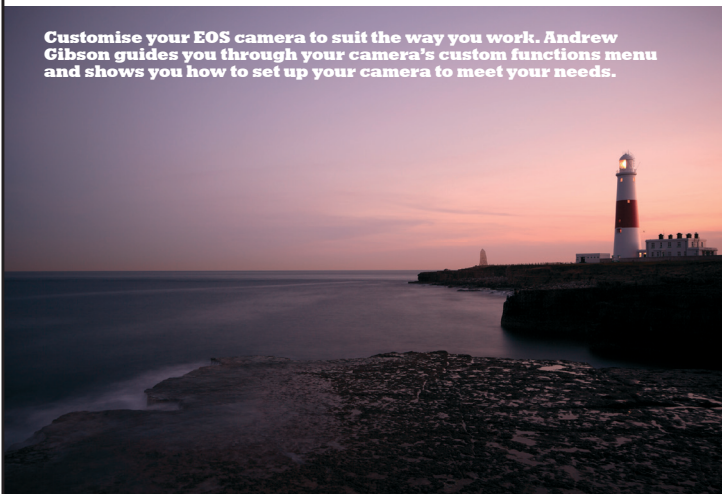


Custom camera

Customise your EOS camera to suit the way you work. Andrew Gibson guides you through your camera's custom functions menu and shows you how to set up your camera to meet your needs.



When you buy a new EOS camera it's designed to work straight out of the box – almost. Simply charge the battery, insert a memory card, set the mode dial – and you are ready to start taking photos.

If you do this you are using the camera's default settings. But by familiarising yourself with your camera's menu you can adapt your camera to suit the way that you like to shoot.

The advent of digital cameras has changed the way some of the camera settings are controlled. The addition of an LCD (liquid crystal display) screen to the back of the camera means that Canon can include a large number of menu options – many more than are available on film cameras. Digital photography also offers many new functions.

Canon splits its menu options into two groups. The first group provides access to the camera's main settings – the functions

Above custom functions help you take photos like this. The photographer used the mirror lockup custom function to help avoid camera shake at a shutter speed of 25 seconds.

EOS 5D Mk II, 17-40mm f4L, 25 seconds at f8, ISO 100.

most camera users will want to change at some time. These include basic settings such as image quality, white balance and Picture Style, and more advanced settings such as flash control and file numbering options.

The second group of options comes under the custom functions menu. Generally speaking these are more advanced options that a newcomer to photography may not want to access at first, but become more useful as your knowledge and understanding of photographic techniques increase.

There is sometimes an overlap between the two groups. For instance, the EOS 1D Mark III and all the EOS cameras that come after it have a flash control menu that groups the settings for the built-in flash and external Speedlite in one place. Previous cameras had some of these settings in the custom functions menu.

Custom function groups



The custom functions menu on the EOS 50D. The functions are divided into four categories.



The ISO speed settings increments custom function menu on the EOS 50D.

On the latest EOS cameras the custom functions menu is divided into four sections. These are Exposure, Image, Autofocus/Drive and Operation/Others. Earlier models present all the options in one continuous menu. The four groups are a useful way of dividing the available custom functions into convenient categories – especially if there are a lot.

Not all custom functions are available on all EOS cameras. Earlier models such as the EOS D30 and 10D have fewer functions than recent ones. Professional and semi-professional cameras have the most.

Exposure

The exposure custom functions let you tweak the way that you use your camera's exposure meter. An example is the ISO speed settings increments custom function, which gives you the option of setting the ISO so that each movement of the main dial changes the ISO by 1 stop instead of the default 1/3 stop.

Image

The image custom functions relate to settings that can be used to enhance image quality. They include Long Exposure Noise Reduction, Highlight Tone Priority and Auto Lighting Optimizer. Most of these are aimed at photographers shooting JPEG – if you shoot in RAW the enhancements can be made with Canon's Digital Photo Professional software.

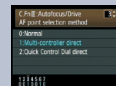
Autofocus/Drive

Autofocus functions help you to adapt the focusing accuracy of the camera – especially for fast-moving subjects. There are more options on the EOS 7D and EOS 1 series cameras as these are more likely to be used for professional sports and wildlife photography.

Operation/Others

Operation/Others is for any custom functions that don't fit into the previous groups.

Custom functions for portrait photography



Set AF point selection method to Multi-controller direct for easy AF point selection while looking through the viewfinder.



Set Auto Lighting Optimizer to Strong to help retain shadow detail in backlit portraits.



Flash sync. speed in Av mode. Selecting option 1 ensures that the shutter speed doesn't drop to a level that might cause camera shake in aperture-priority mode.

AF point selection method Change this to Multi-controller direct so that you can change the active autofocus point using the multi-controller. This lets you change autofocus point while looking through the viewfinder. Useful for activating the autofocus point closest to the subject's eyes, the most important part of the face to have in focus. Avoid the Quick Control dial setting as this is best used to adjust exposure.

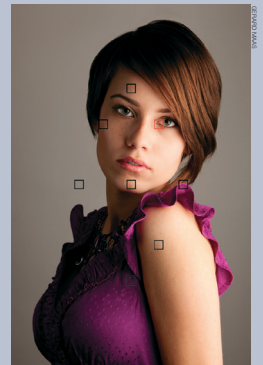
Available on the EOS 20D, 30D, 40D, 50D, 7D, 5D, 5D Mk II, 1D, 1D Mk II, 1D Mk IIN, 1D Mk III, 1D Mk IV, 1Ds, 1Ds Mk II, 1Ds Mk III

Auto Lighting Optimizer Set this to Strong if you're shooting backlit portraits. It increases the detail recorded in the person's face. If you are shooting RAW you can enable the Auto Lighting Optimizer afterwards in Canon's Digital Photo Professional software.

Available on the EOS 450D (enable/disable only), 500D, 550D, 1000D, 50D, 7D, 5D Mk II, 1D Mk IV.

Flash sync. speed in Av mode If you are using flash in aperture-priority mode activate the 1/250-1/8000sec. auto setting (the first number relates to the camera's flash synchronisation shutter speed limit) to prevent the camera setting a shutter speed slower than 1/60 second. This helps to reduce the effects of camera shake.

Available on the EOS 350D, 400D, 450D, 500D, 550D, 1000D, 10D, 20D, 30D, 40D, 50D, 7D, 5D, 5D Mk II, 1D Mk III, 1D Mk IV, 1Ds Mk III



Above With the camera's default settings the only way to change the AF point requires that you move the camera from your eye to look at the controls. Setting the AF point selection method custom function to Multi-controller direct means you can select the AF point while looking through the viewfinder, letting you concentrate on taking photos.

Custom Functions

An appendix to the article 'Custom camera'

from the July-September 2010 issue of EOS magazine



This guide lists all the custom functions of every EOS digital camera. (The EOS 300D does not offer custom functions.)

<i>camera</i>	<i>page</i>
EOS 1D	3
EOS 1D Mark II	3
EOS 1D Mark II N	4
EOS 1D Mark III	5
EOS 1D Mark IV	6
EOS 1Ds	7
EOS 1Ds Mark II	7
EOS 1Ds Mark III	8
EOS 5D	9
EOS 5D Mark II	9
EOS 7D	10
EOS 10D	11
EOS 20D	11
EOS 30D	12
EOS 40D	12
EOS 50D	13
EOS 350D	14
EOS 400D	14
EOS 450D	14
EOS 500D	14
EOS 550D	15
EOS 1000D	15
EOS D30	15
EOS D60	15

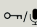

EOS 1D	
C.Fn-1	Finder display during exposure
C.Fn-2	Shutter release without CF card
C.Fn-3	ISO speed expansion
C.Fn-4	Shutter button/AE lock button
C.Fn-5	Manual Tv/Av set. for M exp.
C.Fn-6	Exposure level increments
C.Fn-7	USM lens electronic MF
C.Fn-8	Top LCD panel/Back LCD pane
C.Fn-9	Auto bracketing sequence/cancel
C.Fn-10	AF point illumination
C.Fn-11	AF point selection method
C.Fn-12	Mirror lockup
C.Fn-13	Number of AF points/Spot metering
C.Fn-14	Auto reduction of fill flash
C.Fn-15	Shutter curtain sync
C.Fn-16	Safety shift in Av or Tv
C.Fn-17	AF point activation area
C.Fn-18	Switch to registered AF point
C.Fn-19	Lens AF stop button function
C.Fn-20	AI Servo tracking sensitivity
C.Fn-00	Focusing screen

EOS 1D Mark II	
C.Fn-1	Viewfinder display during exposure
C.Fn-2	Shutter release without CF card
C.Fn-3	<i>Not used</i>
C.Fn-4	Shutter button/AE lock button
C.Fn-5	Manual Tv/Av set. for M exp.
C.Fn-6	Exposure level increments
C.Fn-7	USM lens electronic MF
C.Fn-8	Top LCD panel/rear LCD panel
C.Fn-9	Auto bracketing sequence/Auto cancel
C.Fn-10	AF point illumination
C.Fn-11	AF point selection method
C.Fn-12	Mirror lockup
C.Fn-13	Number of AF points/Spot metering
C.Fn-14	E-TTL II autoflash system
C.Fn-15	Shutter curtain sync
C.Fn-16	Safety shift setting
C.Fn-17	AF point activation area
C.Fn-18	Switch to registered AF point
C.Fn-19	Lens AF stop button function
C.Fn-20	AI Servo tracking sensitivity
C.Fn-21	AI Servo continuous shooting and shooting priority
C.Fn-00	Focusing screen

EOS 1D Mark II N	
C.Fn-1	Finder display during exposure
C.Fn-2	Shutter release without CF card
C.Fn-3	<i>Not used</i>
C.Fn-4	Shutter button/AE lock button
C.Fn-5	Manual Tv/Av set. for M exp.
C.Fn-6	Exposure level increments
C.Fn-7	USM lens electronic MF
C.Fn-8	Top LCD panel/Back LCD panel
C.Fn-9	Auto bracketing sequence/Auto cancel
C.Fn-10	AF point illumination
C.Fn-11	AF point selection method
C.Fn-12	Mirror lockup
C.Fn-13	Number of AF points/Spot metering
C.Fn-14	E-TTL II
C.Fn-15	Shutter curtain sync
C.Fn-16	Safety shift in Av or Tv
C.Fn-17	AF point activation area
C.Fn-18	Switch to registered AF point
C.Fn-19	Lens AF stop button function
C.Fn-20	AI Servo tracking sensitivity
C.Fn-21	Drive speed priority AI Servo
C.Fn-00	Focusing screen

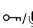

EOS 1D Mk III		
C.Fn I Exposure	1	Exposure level increments
	2	ISO speed setting increments
	3	Set ISO speed range
	4	Bracketing auto cancel
	5	Bracketing sequence
	6	Number of bracketed shots
	7	Spot metering link to AF point
	8	Safety shift
	9	Select usable shooting modes
	10	Select usable metering modes
	11	Exposure mode in manual exposure
	12	Set shutter speed range
	13	Set aperture value range
	14	Apply shooting/metering mode
	15	Flash sync. speed in Av mode
C.Fn II Image	1	Long exposure noise reduction
	2	High ISO speed noise reduction
	3	Highlight tone priority
	4	E-TTL II flash metering
	5	Shutter curtain sync.
	6	Flash firing
	7	Viewfinder info. during exposure
	8	LCD panel illumination during Bulb
	9	INFO button when shooting
C.Fn III Autofocus/ Drive	1	USM lens electronic MF
	2	AI Servo tracking sensitivity
	3	AI Servo 1st/2nd image priority
	4	AI Servo AF tracking method
	5	Lens drive when AF impossible
	6	Lens AF stop button function
	7	AF Microadjustment
	8	AF expansion with selected point
	9	Selectable AF point
	10	Switch to registered AF point
	11	AF point auto selection
	12	AF point display during focus
	13	AF point brightness
	14	AF-assist beam firing
	15	Mirror lockup
	16	Continuous shooting speed
	17	Limit continuous shot count
C.Fn IV Operation/ Others	1	Shutter button/AF-ON button
	2	AF-ON/AE lock button switch
	3	Quick Control Dial in metering
	4	SET button when shooting
	5	Tv/Av setting for Manual exposure
	6	Dial direction during Tv/Av
	7	Av setting without lens
	8	WB + media/image size setting
	9	 button function
	10	Button function when  <OFF>
	11	Focusing screen
	12	Timer length for timer
	13	Shortened release time lag
	14	Add aspect ratio information
	15	Add original decision data
	16	Live View exposure simulation

EOS 1D Mk IV		
C.Fn I Exposure	1	Exposure level increments
	2	ISO speed setting increments
	3	Set ISO speed range
	4	Bracketing auto cancel
	5	Bracketing sequence
	6	Number of bracketed shots
	7	Spot metering link to AF point
	8	Safety shift
	9	Select usable shooting modes
	10	Select usable metering modes
	11	Exposure mode in manual exposure
	12	Set shutter speed range
	13	Set aperture value range
	14	Apply shooting/metering mode
	15	Flash sync. speed in Av mode
	16	AE microadjustment
	17	FE microadjustment
C.Fn II Image	1	Long exposure noise reduction
	2	High ISO speed noise reduction
	3	Highlight tone priority
	4	Auto Lighting Optimizer
	5	E-TTL II flash metering
	6	Shutter curtain sync.
	7	Flash firing
	8	Viewfinder info. during exposure
	9	LCD panel illumination during Bulb
	10	Info. button when shooting

C.Fn III Autofocus/ Drive	1	USM lens electronic MF
	2	AI Servo tracking sensitivity
	3	AI Servo 1st/2nd image priority
	4	AI Servo AF tracking method
	5	Lens drive when AF impossible
	6	Lens AF stop button function
	7	AF Microadjustment
	8	AF expansion with selected point
	9	Multi-controller while metering
	10	Selectable AF point
	11	Switch to registered AF point
	12	AF point auto selection
	13	AF point display during focus
	14	AF point brightness
	15	AF-assist beam firing
	16	Orientation linked AF point
	17	Mirror lockup
	18	Continuous shooting speed
	19	Limit continuous shot count
C.Fn IV Operation/ Others	1	Shutter button/AF-ON button
	2	AF-ON/AE lock button switch
	3	Quick Control Dial in metering
	4	Assign SET button
	5	Tv/Av setting for Manual exposure
	6	Dial direction during Tv/Av
	7	Av setting without lens
	8	WB + media/image size setting
	9	 button function
	10	Button function when  <OFF>
	11	Start movie shooting
	12	Focusing screen
	13	Timer length for timer
	14	Shortened release time lag
	15	Add aspect ration information
	16	Add image verification data

EOS 1Ds	
C.Fn-1	Finder display during exposure
C.Fn-2	Shutter release without CF card
C.Fn-3	ISO speed expansion
C.Fn-4	Shutter button/AE lock button
C.Fn-5	Manual Tv/Av set. for M exp.
C.Fn-6	Exposure level increments
C.Fn-7	USM lens electronic MF
C.Fn-8	Top LCD panel/Back LCD pane
C.Fn-9	Auto bracketing sequence/cancel
C.Fn-10	AF point illumination
C.Fn-11	AF point selection method
C.Fn-12	Mirror lockup
C.Fn-13	Number of AF points/Spot metering
C.Fn-14	Auto reduction of daylight sync
C.Fn-15	Shutter curtain sync
C.Fn-16	Safety shift in Av or Tv
C.Fn-17	AF point activation area
C.Fn-18	Switch to registered AF point
C.Fn-19	Lens AF stop button function
C.Fn-20	AI Servo tracking sensitivity
C.Fn-00	Focusing screen

EOS 1Ds Mark II	
C.Fn-1	Viewfinder display during exposure
C.Fn-2	Shutter release without card
C.Fn-3	Unused
C.Fn-4	Shutter button/AE lock button
C.Fn-5	Manual Tv/Av set. for M exp.
C.Fn-6	Exposure level increments
C.Fn-7	USM lens electronic MF
C.Fn-8	Top LCD panel/Back LCD pane
C.Fn-9	Auto bracketing sequence/cancel
C.Fn-10	AF point illumination
C.Fn-11	AF point selection method
C.Fn-12	Mirror lockup
C.Fn-13	Number of AF points/Spot metering
C.Fn-14	E-TTL II autoflash system
C.Fn-15	Shutter curtain sync
C.Fn-16	Safety shift setting
C.Fn-17	AF point activation area
C.Fn-18	Switch to registered AF point
C.Fn-19	Lens AF stop button function
C.Fn-20	AI Servo tracking sensitivity
C.Fn-00	Focusing screen

EOS 1Ds Mark III		
C.Fn I Exposure	1	Exposure level increments
	2	ISO speed setting increments
	3	Set ISO speed range
	4	Bracketing auto cancel
	5	Bracketing sequence
	6	Number of bracketed shots
	7	Spot metering link to AF point
	8	Safety shift
	9	Select usable shooting modes
	10	Select usable metering modes
	11	Exposure mode in manual exposure
	12	Set shutter speed range
	13	Set aperture value range
	14	Apply shooting/metering mode
	15	Flash sync. speed in Av mode
C.Fn II Image	1	Long exposure noise reduction
	2	High ISO speed noise reduction
	3	Highlight tone priority
	4	E-TTL II flash metering
	5	Shutter curtain sync.
	6	Flash firing
	7	Viewfinder info. during exposure
	8	LCD panel illumination during Bulb
	9	INFO button when shooting
C.Fn III Autofocus/ Drive	1	USM lens electronic MF
	2	AI Servo tracking sensitivity
	3	AI Servo 1st/2nd image priority
	4	AI Servo AF tracking method
	5	Lens drive when AF impossible
	6	Lens AF stop button function
	7	AF Microadjustment
	8	AF expansion with selected point
	9	Selectable AF point
	10	Switch to registered AF point
	11	AF point auto selection
	12	AF point display during focus
	13	AF point brightness
	14	AF-assist beam firing
	15	Mirror lockup
	16	Continuous shooting speed
	17	Limit continuous shot count
C.Fn IV Operation/ Others	1	Shutter button/AF-ON button
	2	AF-ON/AE lock button switch
	3	Quick Control Dial in metering
	4	SET button when shooting
	5	Tv/Av setting for Manual exposure
	6	Dial direction during Tv/Av
	7	Av setting without lens
	8	WB + media/image size setting
	9	 button function
	10	Button function when  <OFF>
	11	Focusing screen
	12	Timer length for timer
	13	Shortened release time lag
	14	Add aspect ratio information
	15	Add original decision data
	16	Live View exposure simulation

EOS 5D	
C.Fn-1	SET function when shooting
C.Fn-2	Long exposure noise reduction
C.Fn-3	Flash sync. speed in AV mode
C.Fn-4	Shutter button/AE lock button
C.Fn-5	AF-assist beam
C.Fn-6	Exposure level increments
C.Fn-7	Flash firing
C.Fn-8	ISO expansion
C.Fn-9	Bracket. sequence/Auto cancel
C.Fn-10	Superimposed display
C.Fn-11	Menu button display position
C.Fn-12	Mirror lockup
C.Fn-13	AF point selection method
C.Fn-14	E-TTL II
C.Fn-15	Shutter curtain sync
C.Fn-16	Safety shift in Av or Tv
C.Fn-17	AF point activation area
C.Fn-18	LCD displ -> Return to shoot
C.Fn-19	Lens AF stop function button
C.Fn-20	Add original decision data
C.Fn-00	Focusing screen

EOS 5D Mk II		
C.Fn I Exposure	1	Exposure level increments
	2	ISO speed setting increments
	3	ISO expansion
	4	Bracketing auto cancel
	5	Bracketing sequence
	6	Safety shift
	7	Flash sync. speed in Av mode
C.Fn II Image	1	Long exposure noise reduction
	2	High ISO speed noise reduction
	3	Highlight tone priority
	4	Auto Lighting Optimizer
C.Fn III Autofocus/Drive	1	Lens drive when AF impossible
	2	Lens AF stop button function
	3	AF point selection method
	4	Superimposed display
	5	AF-assist beam firing
	6	Mirror lockup
	7	AF point area expansion
	8	AF Microadjustment
C.Fn IV Operation/ Others	1	Shutter button/AF-ON button
	2	AF-ON/AE lock button switch
	3	Assign SET button
	4	Dial direction during Tv/Av
	5	Focusing Screen
	6	Add original decision data

EOS 7D		
C.Fn I Exposure	1	Exposure level increments
	2	ISO speed setting increments
	3	ISO expansion
	4	Bracketing auto cancel
	5	Bracketing sequence
	6	Safety shift
	7	Flash sync. speed in Av mode
C.Fn II Image	1	Long exposure noise reduction
	2	High ISO speed noise reduction
	3	Highlight tone priority
C.Fn III Autofocus/ Drive	1	AI Servo tracking sensitivity
	2	AI Servo 1st/2nd image priority
	3	AI Servo AF tracking method
	4	Lens drive when AF impossible
	5	AF Microadjustment
	6	Select AF area selection mode
	7	Manual AF point selection pattern
	8	VF display illumination
	9	Display all AF points
	10	Focus display in AI Servo/MF
	11	AF-assist beam firing
	12	Orientation linked AF point
	13	Mirror lockup
C.Fn IV Operation/ Others	1	Custom controls
	2	Dial direction during Tv/Av
	3	Add image verification data
	4	Add aspect ratio information

EOS 10D	
C.Fn-1	SET button func. when shooting
C.Fn-2	Shutter release w/o CF card
C.Fn-3	Flash sync in AV mode
C.Fn-4	Shutter button/AE lock button
C.Fn-5	AF-assist beam/Flash firing
C.Fn-6	Exposure level increments
C.Fn-7	AF point registration
C.Fn-8	RAW+JPEG rec.
C.Fn-9	Bracket. sequence/Auto cancel
C.Fn-10	Superimposed display
C.Fn-11	Menu button display position
C.Fn-12	Mirror lockup
C.Fn-13	Assist button function
C.Fn-14	Auto reduction of fill flash
C.Fn-15	Shutter curtain sync
C.Fn-16	Safety shift in Av or Tv
C.Fn-17	Lens AF stop button function

EOS 20D	
C.Fn-1	SET button func. when shooting
C.Fn-2	Long exposure noise reduction
C.Fn-3	Flash sync in AV mode
C.Fn-4	Shutter button/AE lock button
C.Fn-5	AF-assist beam
C.Fn-6	Exposure level increments
C.Fn-7	Flash firing
C.Fn-8	ISO expansion
C.Fn-9	Bracket. sequence/Auto cancel
C.Fn-10	Superimposed display
C.Fn-11	Menu button display position
C.Fn-12	Mirror lockup
C.Fn-13	AF point selection method
C.Fn-14	E-TTL II
C.Fn-15	Shutter curtain sync
C.Fn-16	Safety shift in Av or Tv
C.Fn-17	Lens AF stop button function
C.Fn-18	Add original decision data

EOS 30D	
C.Fn-1	SET button func. when shooting
C.Fn-2	Long exposure noise reduction
C.Fn-3	Flash sync in AV mode
C.Fn-4	Shutter button/AE lock button
C.Fn-5	AF-assist beam
C.Fn-6	Exposure level increments
C.Fn-7	Flash firing
C.Fn-8	ISO expansion
C.Fn-9	Bracket. sequence/Auto cancel
C.Fn-10	Superimposed display
C.Fn-11	Menu button display position
C.Fn-12	Mirror lockup
C.Fn-13	AF point selection method
C.Fn-14	E-TTL II
C.Fn-15	Shutter curtain sync
C.Fn-16	Safety shift in Av or Tv
C.Fn-17	Magnified view
C.Fn-18	Lens AF stop button function
C.Fn-19	Add original decision data

EOS 40D		
C.Fn I Exposure	1	Exposure level increments
	2	ISO speed setting increments
	3	ISO expansion
	4	Bracketing auto cancel
	5	Bracketing sequence
	6	Safety shift
	7	Flash sync. speed in Av mode
C.Fn II Image	1	Long exposure noise reduction
	2	High ISO speed noise reduction
	3	Highlight tone priority
C.Fn III Autofocus/Drive	1	Lens drive when AF impossible
	2	Lens AF stop button function
	3	AF point selection method
	4	Superimposed display
	5	AF-assist beam firing
	6	AF during Live View shooting
	7	Mirror lockup
C.Fn IV Operation/ Others	1	Shutter button/AF-ON button
	2	AF-ON/AE lock button switch
	3	SET button when shooting
	4	Dial direction during Tv/Av
	5	Focusing Screen
	6	Add original decision data
	7	Live View exposure simulation

EOS 50D		
C.Fn I Exposure	1	Exposure level increments
	2	ISO speed setting increments
	3	ISO expansion
	4	Bracketing auto cancel
	5	Bracketing sequence
	6	Safety shift
	7	Flash sync. speed in Av mode
C.Fn II Image	1	Long exposure noise reduction
	2	High ISO speed noise reduction
	3	Highlight tone priority
C.Fn III Autofocus/Drive	1	Lens drive when AF impossible
	2	Lens AF stop button function
	3	AF point selection method
	4	Superimposed display
	5	AF-assist beam firing
	6	Mirror lockup
	7	AF Microadjustment
C.Fn IV Operation/ Others	1	Shutter button/AF-ON button
	2	AF-ON/AE lock button switch
	3	Assign SET button
	4	Dial direction during Tv/Av
	5	Focusing Screen
	6	Add original decision data
	7	Assign FUNC. Button

EOS 350D

C.Fn-1	SET button/Cross keys funct.
C.Fn-2	Long exposure noise reduction
C.Fn-3	Flash sync. Speed in AV mode
C.Fn-4	Shutter button/AE lock button
C.Fn-5	AF-assist beam
C.Fn-6	Exposure level increments
C.Fn-7	Mirror lockup
C.Fn-8	E-TTL II
C.Fn-9	Shutter curtain sync.

EOS 400D

C.Fn-1	SET button/Cross keys funct.
C.Fn-2	Long exposure noise reduction
C.Fn-3	Flash sync. Speed in AV mode
C.Fn-4	Shutter button/AE lock button
C.Fn-5	AF-assist beam
C.Fn-6	Exposure level increments
C.Fn-7	Mirror lockup
C.Fn-8	E-TTL II
C.Fn-9	Shutter curtain sync.
C.Fn-10	Magnified view
C.Fn-11	LCD display when power ON

EOS 450D

C.Fn I Exposure	1	Exposure level increments
	2	Flash sync. Speed in AV mode
C.Fn II Image	3	Long exposure noise reduction
	4	High ISO speed noise reduction
	5	Highlight tone priority
	6	Auto lighting optimizer
C.Fn III Autofocus/Drive	7	AF-assist beam firing
	8	AF during Live View shooting
	9	Mirror lockup
C.Fn IV Operation/Others	10	Shutter/AE lock button
	11	SET button when shooting
	12	LCD display when power ON
	13	Add original decision data

EOS 500D

C.Fn I Exposure	1	Exposure level increments
	2	ISO expansion
	3	Flash sync. speed in Av mode
C.Fn II Image	4	Long exposure noise reduction
	5	High ISO speed noise reduction
	6	Highlight tone priority
	7	Auto Lighting Optimizer
C.Fn III Autofocus/Drive	8	AF-assist beam firing
	9	Mirror lockup
C.Fn IV Operation/ Others	10	Shutter/AE lock button
	11	Assign SET button
	12	LCD display when power ON
	13	Add original decision data

EOS 550D

C.Fn I Exposure	1	Exposure level increments
	2	ISO expansion
	3	Flash sync. speed in Av mode
C.Fn II Image	4	Long exposure noise reduction
	5	High ISO speed noise reduction
	6	Highlight tone priority
C.Fn III Autofocus/Drive	7	AF-assist beam firing
	8	Mirror lockup
C.Fn IV Operation/Others	9	Shutter/AE lock button
	10	Assign SET button
	11	LCD display when power ON
	12	Add image verification data

EOS 1000D

C.Fn I Exposure	1	Exposure level increments
	2	Flash sync. speed in Av mode
C.Fn II Image	3	Long exposure noise reduction
	4	High ISO speed noise reduction
	5	Auto Lighting Optimizer
C.Fn III Autofocus/Drive	6	AF-assist beam firing
	7	AF during Live View shooting
	8	Mirror lockup
C.Fn IV Operation/Others	9	Shutter/AE lock button
	10	SET button when shooting
	11	LCD display when power ON
	12	Add original decision data

EOS D30

C.Fn-1	Long exposure noise reduction
C.Fn-2	Shutter button/AE lock button
C.Fn-3	Mirror lock
C.Fn-4	Tv, Av and exposure level
C.Fn-5	AF-assist light
C.Fn-6	Shutter speed in Av mode with flash
C.Fn-7	AEB sequence/auto cancellation
C.Fn-8	Shutter curtain sync.
C.Fn-9	Lens AF stop button Fn. Switch
C.Fn-10	Auto reduction of fill flash
C.Fn-11	Menu button position
C.Fn-12	SET button func. when shooting
C.Fn-13	Sensor cleaning

EOS D60

C.Fn-1	Unused
C.Fn-2	Shutter button/AE lock button
C.Fn-3	Mirror lock
C.Fn-4	Tv, Av and exposure level
C.Fn-5	AF-assist beam/Flash firing
C.Fn-6	Shutter speed in Av mode with flash
C.Fn-7	AEB sequence/auto cancellation
C.Fn-8	Shutter curtain sync.
C.Fn-9	Lens AF stop button Fn. Switch
C.Fn-10	Auto reduction of fill flash
C.Fn-11	Menu button position
C.Fn-12	SET button func. when shooting
C.Fn-13	Sensor cleaning
C.Fn-14	Superimposed display
C.Fn-15	Shutter release w/o CF card